



News 2007

◆ UPLC-MS/MS and UV or ELSD-Detection (Ultra Performance Liquid Chromatographie)

- fast analysis
- high sensitivity
- high resolution





News 2007

◆ UPLC-MS/MS and UV or ELSD-Detection

(Ultra Performance Liquid Chromatographie)

Application

Amino Acid Analysis

- Hydrolysat
- Cell Culture
- Food Analysis
- Physiological Clinical

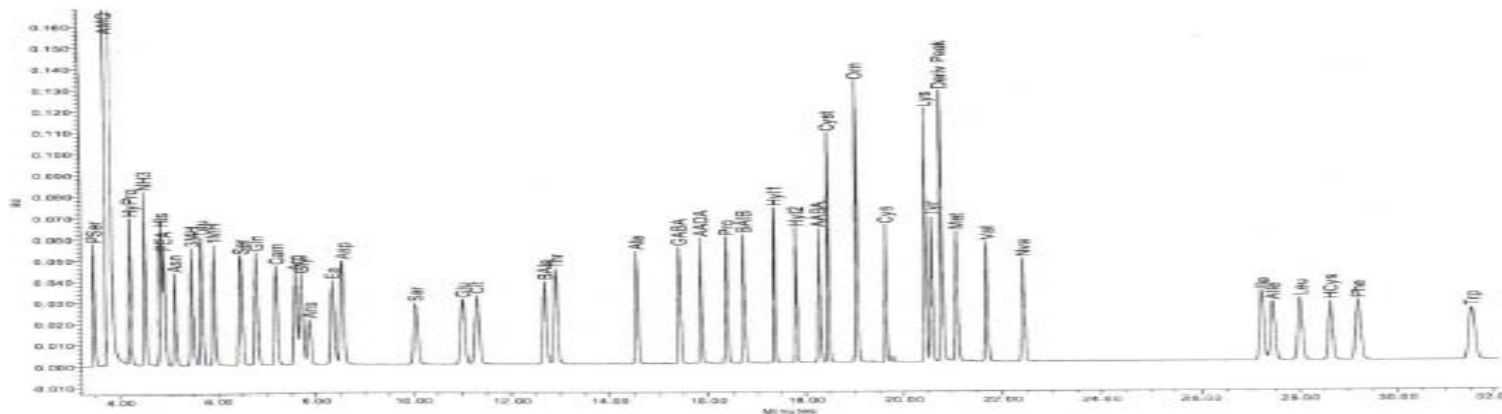


News 2007

◆ UPLC-MS/MS and UV or ELSD-Detection

(Ultra Performance Liquid Chromatographie)

Amino Acid Analysis



News 2007

◆ UPLC-MS/MS and UV or ELSD-Detection

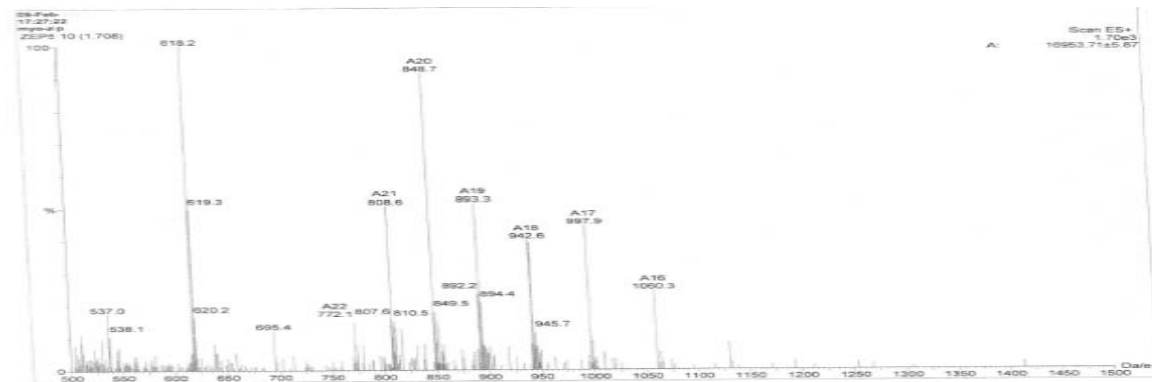
(Ultra Performance Liquid Chromatographie)

Application

Molecular weight determination of Peptides

Example: myoglobin

- mass: 800,6 charge 21
- mass: 848,7 charge 20
- mass: 893,3 charge 19
- mass: 942,6 charge 18
- mass: 997,9 charge 17
- mass: 106,3 charge 16



Calculation: $16953,71 \pm 5.87$